

## Fire Stations / City Halls / Municipal:

### Alta Vista Fire Station, 2008

Location: Alta Vista, Iowa  
Size (Mechanical Cost): \$59,240  
Building Description: New Construction  
General Contractor: LC Builders  
Contact Number: (641) 394-4008

### Big Lake Fire Hall, 2006

Location: Big Lake, Minnesota  
Size (Mechanical Cost): \$78,060  
Building Description: Addition / Renovation  
General Contractor: Greystone Construction  
Contact Number: (952) 496-2227

### Byron City Hall, 2001

Location: Byron, Minnesota  
Size (Mechanical Cost): \$295,000  
Building Description: New Construction  
General Contractor: J Met-Con Construction  
Contact Number: (507) 332-2266

### Dodge Center Fire Station, 2001

Location: Dodge Center, Minnesota  
Size (Mechanical Cost): \$123,765  
Building Description: New Construction  
General Contractor: J D Driver  
Contact Number: (507) 437-6050

### Edina Fire Station, 2007

Location: Edina, Minnesota  
Size (Mechanical Cost): \$335,000  
Building Description: New Construction  
General Contractor: Rochon Corporation  
Contact Number: (763) 559-9393

### Ellen Tenborg Community Center, 2009

Location: Rushford, Minnesota  
Size (Mechanical Cost): \$103,000  
Building Description: Renovation  
General Contractor: SEMCAC  
Contact Number: (507) 765-2761

### Farmington City Hall, 2007

Location: Farmington, Minnesota  
Size (Mechanical Cost): \$1,345,780  
Building Description: New Construction  
General Contractor: Lund-Martin Construction  
Contact Number: (612) 782-2250

Hampton City Hall & Fire Station, 2008

Location: Hampton, Minnesota  
Size (Mechanical Cost): \$102,020  
Building Description: Renovation  
General Contractor: Red Wing Construction  
Contact Number: (651) 388-7619

Kasson Post Office, 2008

Location: Kasson, Minnesota  
Size (Mechanical Cost): \$31,542  
Building Description: Renovation  
General Contractor: Morcon Construction  
Contact Number: (612) 725-6043

Kasson Public Works, 2008

Location: Kasson, Minnesota  
Size (Mechanical Cost): \$92,180  
Building Description: New Construction  
General Contractor: A. B. Systems  
Contact Number: (507) 288-9397

National Guard Armory, 2007

Location: Albert Lea, Minnesota  
Size (Mechanical Cost): \$98,157  
Building Description: Renovation  
General Contractor: Joseph Company  
Contact Number: (507) 437-3284

National Guard Armory, 2007

Location: Bloomington, Minnesota  
Size (Mechanical Cost): \$104,263  
Building Description: Renovation  
General Contractor: Joseph Company  
Contact Number: (507) 437-3284

National Guard Armory, 2007

Location: Rochester, Minnesota  
Size (Mechanical Cost): \$55,720  
Building Description: Renovation  
General Contractor: Joseph Company  
Contact Number: (507) 437-3284

New Hampton Fire Station, 2008

Location: New Hampton, Iowa  
Size (Mechanical Cost): \$248,000  
Building Description: New Construction  
General Contractor: Peters Construction  
Contact Number: (641) 394-4008



Rochester Airport, 2005

Location: Rochester, Minnesota  
Size (Mechanical Cost): \$16,890  
Building Description: Renovation  
General Contractor: Larson Construction  
Contact Number: (319) 334-7061

Rochester International Airport, 2006

Location: Rochester, Minnesota  
Size (Mechanical Cost): \$481,009  
Building Description: Renovation  
General Contractor: Schwab LLC  
Contact Number: (507) 454-5000

Rochester Fire Station #3, 2002

Location: Rochester, Minnesota  
Size (Mechanical Cost): \$219,390  
Building Description: New Construction  
General Contractor: Floyd Larson Construction  
Contact Number: (507) 288-6991

Rochester Fire Station #5, 2007

Location: Rochester, Minnesota  
Size (Mechanical Cost): \$458,000  
Building Description: New Construction  
General Contractor: A. E. Benike  
Contact Number: (507) 288-6575

Rosemount Fire Station, 2006

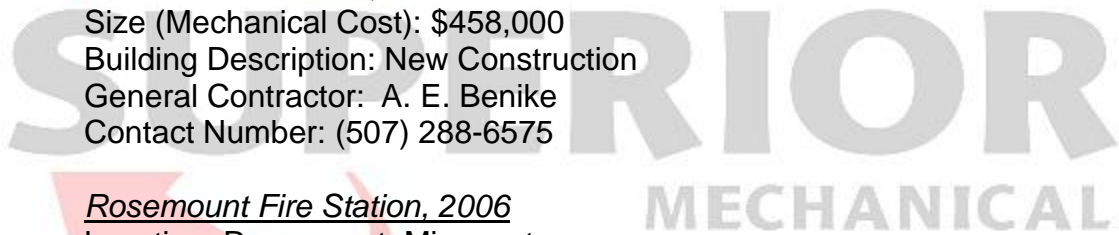
Location: Rosemount, Minnesota  
Size (Mechanical Cost): \$234,000  
Building Description: New Construction  
General Contractor: Amcon Construction  
Contact Number: (651) 379-9028

Shakopee/Mdewakanton Sioux Community Fire Station, 2007

Location: Prior Lake, Minnesota  
Size (Mechanical Cost): \$471,233  
Building Description: New Construction  
General Contractor: Ebert Construction  
Contact Number: (763) 498-7844

Soldier's Field Park Toilet Facilities, 2005

Location: Rochester, Minnesota  
Size (Mechanical Cost): \$27,500  
Building Description: New Construction  
General Contractor: Schoeppner, Inc.  
Contact Number: (507) 286-8672



St. Charles Public Library, 2005

Location: St. Charles, Minnesota  
Size (Mechanical Cost): \$94,572  
Building Description: Renovation  
General Contractor: Larson Construction  
Contact Number: (319) 334-7061

Waseca Water Park, 2007

Location: Waseca, Minnesota  
Size (Mechanical Cost): \$221,340  
Building Description: New Construction  
General Contractor: ALM Builders  
Contact Number: (800) 967-1711

Winona County Law Enforcement, 2004

Location: Winona, Minnesota  
Size (Mechanical Cost): \$157,000  
Building Description: Renovation  
General Contractor: Larson Construction  
Contact Number: (319) 334-7061

Winona County Law Enforcement, 2005

Location: Winona, Minnesota  
Size (Mechanical Cost): \$163,973  
Building Description: Renovation  
General Contractor: Larson Construction  
Contact Number: (319) 334-7061

Zumbrota Area Ambulance, 2008

Location: Zumbrota, Minnesota  
Size (Mechanical Cost): \$35,336  
Building Description: New Construction  
General Contractor: Tri-Valley Construction  
Contact Number: N/A



## Financial Institutions:

### Affinity Plus Credit Union, 2002

Location: Rochester, Minnesota  
Size (Mechanical Cost): \$34,930  
Building Description: New Construction  
General Contractor: Weis Builders  
Contact Number: (507) 288-2041

### Altura State Bank, 1997

Location: Altura, Minnesota  
Size (Mechanical Cost): \$28,000  
Building Description: New Construction  
General Contractor: W. A. Kreofsky  
Contact Number: (507) 534-3103

### Citizens State Bank, 2001

Location: Hayfield, Minnesota  
Size (Mechanical Cost): \$48,350  
Building Description: New Construction  
General Contractor: Joseph Company  
Contact Number: (507) 437-3284

### CUNA Mutual Group, 2009

Location: Waverly, Iowa  
Size (Mechanical Cost): \$928,150  
Building Description: Multi-Story New Construction  
General Contractor: Cardinal Construction  
Contact Number: (319) 232-5400

### CUNA Mutual Group, Phase 2, 2010

Location: Waverly, Iowa  
Size (Mechanical Cost): \$792,400  
Building Description: Renovation  
General Contractor: Miron Construction  
Contact Number: (319) 298-5202

### Eastwood Bank, 1998

Location: Stewartville, Minnesota  
Size (Mechanical Cost): \$44,000  
Building Description: New Construction  
General Contractor: A. B. Systems  
Contact Number: (507) 288-9397

### Farm Credit Services, 1998

Location: Owatonna, Minnesota  
Size (Mechanical Cost): \$73,727  
Building Description: New Construction  
General Contractor: M.E.C. Construction  
Contact Number: (507) 289-3221

First Security Bank, 2006

Location: Kasson, Minnesota  
Size (Mechanical Cost): \$41,800  
Building Description: New Construction  
General Contractor: A. E. Benike  
Contact Number: (507) 288-6575

Home Federal, 2000

Location: Rochester, Minnesota  
Size (Mechanical Cost): \$28,000  
Building Description: New Construction  
General Contractor: A. B. Systems  
Contact Number: (507) 288-9397

IBM Credit Union, 1994

Location: Rochester, Minnesota  
Size (Mechanical Cost): \$240,000  
Building Description: New Construction  
General Contractor: Weis Builders  
Contact Number: (507) 288-2041

Olmsted National Bank, 2006

Location: Rochester, Minnesota  
Size (Mechanical Cost): \$611,800  
Building Description: Multi-Story, New Construction  
General Contractor: Knutson  
Contact Number: (507) 280-9778

Red Wing Credit Union, 2001

Location: Red Wing, Minnesota  
Size (Mechanical Cost): \$68,353  
Building Description: New Construction  
General Contractor: Shingobee Builders  
Contact Number: (612) 479-1300

US Bank, 2005

Location: Rochester, Minnesota  
Size (Mechanical Cost): \$58,212  
Building Description: New Construction  
General Contractor: Steiner Construction  
Contact Number: (952) 473-5650

SUPERIOR  
MECHANICAL

## Churches/Worship Centers:

### Ascension Lutheran Church, 2003

Location: Rochester, Minnesota  
Size (Mechanical Cost): \$68,148  
Building Description: Addition/Renovation  
General Contractor: Knutson Construction  
Contact Number: (507) 280-9788

### Autumn Ridge Church/Chapel , 2004

Location: Rochester, Minnesota  
Size (Mechanical Cost): \$1,162,287  
Building Description: New Construction  
General Contractor: A. E. Benike  
Contact Number: (507) 288-6757

### B'nai Israel Synagogue, 2007

Location: Rochester, Minnesota  
Size (Mechanical Cost): \$547,167  
Building Description: New Construction  
General Contractor: A. E. Benike  
Contact Number: (507) 288-6757

### Christ Community Church, 2003

Location: Rochester, Minnesota  
Size (Mechanical Cost): \$306,484  
Building Description: Addition/Renovation  
General Contractor: Schroeder - Leverington  
Contact Number: (952) 835-3600

### Crosswinds Church, 2007

Location: Rochester, Minnesota  
Size (Mechanical Cost): \$140,000  
Building Description: New Construction  
General Contractor: Brown Construction  
Contact Number: (308) 338-1212

### Decorah Covenant Church, 2009

Location: Decorah, Iowa  
Size (Mechanical Cost): \$78,706  
Building Description: Renovation  
General Contractor: Reliable Contractors  
Contact Number: (507) 288-4600

### First Baptist Chapel, 2005

Location: Rochester, Minnesota  
Size (Mechanical Cost): \$61,147  
Building Description: New Construction  
General Contractor: Key Builders  
Contact Number: (507) 288-3235

Immaculate Heart of Mary Church, 2008

Location: Cross Lake, Minnesota  
Size (Mechanical Cost): \$498,000  
Building Description: New Construction  
General Contractor: Donlar Construction  
Contact Number: (320) 253-3354

Jesus Christ of Latter Day Saints: Misc. Projects 2007

Location: Red Wing/New Prague/ Oakdale, Minnesota  
Size (Mechanical Cost): \$104,939.  
Building Description: New Construction / New Construction / Renovation  
General Contractor: KBS / Rochon Corp / Stodola-Maas Construction  
Contact Number: (507) 534-3855 / (763) 559-9393 / (920) 923-6086

Pax Christi Church, 1998

Location: Rochester, Minnesota  
Size (Mechanical Cost): \$270,500  
Building Description: New Construction  
General Contractor: A. E. Benike  
Contact Number: (507) 288-6757

Resurrection Church, 2008

Location: Rochester, Minnesota  
Size (Mechanical Cost): \$31,051  
Building Description: Renovation / Addition  
General Contractor: Weis Builders  
Contact Number: (507) 288-2041

Rochester Pentecostal Church, 200

Location: Rochester, Minnesota  
Size (Mechanical Cost): \$32,253  
Building Description: New Construction  
General Contractor: Kreofsky Building Systems  
Contact Number: (507) 534-3855

Timberwood Church, 2008

Location: Nisswa, Minnesota  
Size (Mechanical Cost): \$240,000  
Building Description: New Construction  
General Contractor: Nor-Son Construction  
Contact Number: (218) 828-0487

SUPERIOR  
MECHANICAL

## Medical Institutions:

### Affordable Dentures, 2005

Location: Rochester, Minnesota  
Size (Mechanical Cost): \$48,609  
Building Description: New Construction  
General Contractor: Weis Builders  
Contact Number: (507) 288-2041

### Albert Lea Medical Center, 2006

Location: Albert Lea, Minnesota  
Size (Mechanical Cost): \$391,222  
Building Description: New Construction  
General Contractor: Joseph Company  
Contact Number: (507) 288-6757

### Gift of Life Transplant House, 1996, 2000, 2002, 2009

Location: Rochester, Minnesota  
Size (Mechanical Cost): \$1,085,000  
Building Description: Addition / New Construction  
General Contractor: Weis Builders  
Contact Number: (507) 288-2041

### Kardia Health, 2009

Location: Rochester, Minnesota  
Size (Mechanical Cost): \$61,877  
Building Description: Multi Story Tenant Build-out  
General Contractor: Weis Builders  
Contact Number: (507) 288-2041

### Lonsdale Clinic, 2005

Location: Lonsdale, Minnesota  
Size (Mechanical Cost): \$201,706  
Building Description: New Construction  
General Contractor: Kraus-Anderson  
Contact Number: (507) 288-6757

### Mayo Clinic, 1998

Location: Waseca, Minnesota  
Size (Mechanical Cost): \$625,519  
Building Description: New Construction / Addition  
General Contractor: Joseph Company  
Contact Number: (507) 288-6757

### Mayo Clinic Warehouse, 1998

Location: Rochester, Minnesota  
Size (Mechanical Cost): \$185,383  
Building Description: New Construction  
General Contractor: Weis Builders  
Contact Number: (507) 288-6757

Mayo Hospital, Lake City, 2000

Location: Lake City, Minnesota  
Size (Mechanical Cost): \$1,277,379  
Building Description: New Construction  
General Contractor: Weis Builders  
Contact Number: (507) 288-6757

Olmsted Medical Center, 2004

Location: Byron, Minnesota  
Size (Mechanical Cost): \$41,962  
Building Description: New Construction  
General Contractor: Construction Collaborative  
Contact Number: (507) 289-9002

Olmsted Medical Group, 2004

Location: Chatfield, Minnesota  
Size (Mechanical Cost): \$38,040  
Building Description: New Construction  
General Contractor: Construction Collaborative  
Contact Number: (507) 289-9002

Samaritan Bethany, Home on Eighth, 2010

Location: Rochester, Minnesota  
Size (Mechanical Cost): \$4,310,449.00  
Building Description:  
General Contractor: A. E. Benike  
Contact Number: (507) 288-6575

St. Ansgar Clinic, 2005

Location: Saint Ansgar, IA  
Size (Mechanical Cost): \$242,613  
Building Description: New Construction  
General Contractor: Larson Contracting  
Contact Number: (507) 288-6757

Superior Dental, 2008

Location: Rochester, Minnesota  
Size (Mechanical Cost): \$19,000  
Building Description: New Construction  
General Contractor: A. E. Benike  
Contact Number: (507) 288-6575

Trinity Care Center, 2008

Location: Farmington, Minnesota  
Size (Mechanical Cost): \$432,653  
Building Description: Addition  
General Contractor: Prime General Contractors  
Contact Number: (952) 746-3638



United Hospital District, 2010

Location: Blue Earth, Minnesota  
Size (Mechanical Cost): \$2,815,404.00  
Building Description: Renovation  
General Contractor: United Builders  
Contact Number: (507) 526-2313

Winona Health, 2009

Location: Rushford, Minnesota  
Size (Mechanical Cost): \$114,000  
Building Description: Renovation  
General Contractor: Schwab LLC  
Contact Number: (507) 454-5000

Winona Science Lab, 2003

Location: Red Wing, Minnesota  
Size (Mechanical Cost): \$234,769  
Building Description: Renovation  
General Contractor: Larson Construction  
Contact Number: (319) 334-7061

WWT Red Wing Lab, 2005

Location: Red Wing, Minnesota  
Size (Mechanical Cost): \$286,494  
Building Description: Renovation  
General Contractor: Graus Contracting, Inc  
Contact Number: (651) 437-4515



## Schools:

### Blooming Prairie Schools, 2008

Location: Blooming Prairie, Minnesota  
Size (Mechanical Cost): \$3,752,145  
Building Description: Addition/Renovation  
General Contractor: Kraus-Anderson  
Contact Number: (612) 332-7281

### Byron Middle School, 2006

Location: Byron, Minnesota  
Size (Mechanical Cost): \$113,034  
Building Description: Addition/Renovation  
General Contractor: Independent School District #531  
Contact Number: (507) 533-1438

### Chatfield High School, 2009

Location: Chatfield, Minnesota  
Size (Mechanical Cost): \$244,000  
Building Description: New Construction  
General Contractor: RA Morton  
Contact Number: (320) 251-0262

### Churchill Elementary School, 2005

Location: Rochester, Minnesota  
Size (Mechanical Cost): \$348,651  
Building Description: Addition/Renovation  
General Contractor: Floyd Larson Construction  
Contact Number: (507) 288-6991

### Gage Elementary School, 2004

Location: Rochester, Minnesota  
Size (Mechanical Cost): \$273,423  
Building Description: Addition/Renovation  
General Contractor: Floyd Larson Construction  
Contact Number: (507) 288-6991

### Hartley Elementary School, 2005

Location: Waseca, Minnesota  
Size (Mechanical Cost): \$270,852  
Building Description: Addition/Renovation  
General Contractor: RoCon Construction  
Contact Number: (507) 451-8810

### Heintz Center, 2006

Location: Rochester, Minnesota  
Size (Mechanical Cost): \$4500  
Building Description: Remodel  
General Contractor: Interstate Roofing  
Contact Number: (952) 935-7663

Minnesota School of Business, 2005 & 2006

Location: Blaine, Minnesota  
Size (Mechanical Cost): \$165,000  
Building Description: Multi Story New Construction  
General Contractor: Winkelman Building Corp  
Contact Number: (320) 253-2411

Minnetonka Middle School, 2009

Location: Minnetonka, Minnesota  
Size (Mechanical Cost): \$120,000  
Building Description: Addition/Renovation  
General Contractor: Rochon  
Contact Number: (763) 559-9393

New Horizon Academy, 2008

Location: Rochester, Minnesota  
Size (Mechanical Cost): \$103,670  
Building Description: New Construction  
General Contractor: Weis Builders  
Contact Number: (507) 288-2041

Plainview Schools, 2006

Location: Plainview, Minnesota  
Size (Mechanical Cost): \$2,696,507  
Building Description: Addition/Renovation  
General Contractor: Kraus-Anderson  
Contact Number: (612) 332-7281

Plainview Elgin High School, 2010

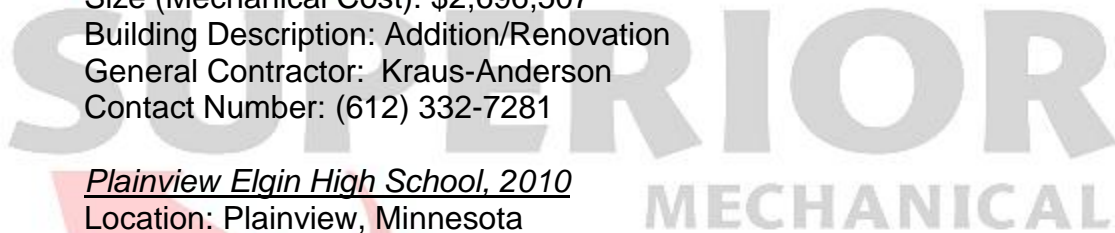
Location: Plainview, Minnesota  
Size (Mechanical Cost): \$611,435  
Building Description: Renovation  
General Contractor: Plainview Elgin High School  
Contact Number: (507) 876-2212

Primrose School, 2009

Location: Rochester, Minnesota  
Size (Mechanical Cost): \$82,000  
Building Description: New Construction  
General Contractor: A. B. Systems  
Contact Number: (507) 288-9397

Resurrection Lutheran School, 2001

Location: Rochester, Minnesota  
Size (Mechanical Cost): \$436,745  
Building Description: New Construction  
General Contractor: Knutson Construction  
Contact Number: (507) 280-9768



Rollingstone School, 1995

Location: Rolling Stone, Minnesota  
Size (Mechanical Cost): \$550,000  
Building Description: New Construction  
General Contractor: Schroeder - Leverington  
Contact Number: (952) 835-3600

St. Charles Elementary, 2002

Location: St. Charles, Minnesota  
Size (Mechanical Cost): \$1,762,129  
Building Description: Addition/Renovation  
General Contractor: Larson Construction  
Contact Number: (319) 334-7061

Stewartville Schools, 2007

Location: Stewartville, Minnesota  
Size (Mechanical Cost): \$3,752,145  
Building Description: Addition/Renovation  
General Contractor: Independent School District #534  
Contact Number: (507) 533-1599

Stewartville Schools, 2008

Location: Stewartville, Minnesota  
Size (Mechanical Cost): \$808,628  
Building Description: Renovation  
General Contractor: Independent School District #534  
Contact Number: (507) 533-1599

Stewartville Central Elementary School, 2010

Location: Stewartville, Minnesota  
Size (Mechanical Cost): \$6,870  
Building Description: Renovation  
General Contractor: Stewartville Public School  
Contact Number: (507) 533-1438

University of MN, City Square, 2007

Location: Rochester, Minnesota  
Size (Mechanical Cost): \$435,706  
Building Description: Renovation  
General Contractor: Weis Builders  
Contact Number: (507) 288-6757

University of Northern Iowa, 2009

Location: Cedar Falls, Iowa  
Size (Mechanical Cost): \$152,840.00  
Building Description: Renovation  
General Contractor: Peters Construction  
Contact Number: (319) 236-2003

Upper Iowa University, 2010

Location: Fayette, Iowa  
Size (Mechanical Cost): \$1,668,621  
Building Description: Miscellaneous Projects  
General Contractor: The Samuels Group  
Contact Number: (715) 842-2222

Washington Elementary, 2009

Location: Rochester Minnesota  
Size (Mechanical Cost): \$7,400  
Building Description: Renovation  
General Contractor: A. E. Benike  
Contact Number: (507) 288-6575

Winona Middle School, 2003

Location: Winona, Minnesota  
Size (Mechanical Cost): \$572,990  
Building Description: Addition/Renovation  
General Contractor: Key Construction  
Contact Number: (316) 263-9515

Winona State University – Pasteur Hall, 2005

Location: Winona, Minnesota  
Size (Mechanical Cost): \$2,905,182  
Building Description: Renovation  
General Contractor: Market & Johnson  
Contact Number: (608) 784-5000

Zumbro Education District, 2009

Location: Byron, Minnesota  
Size (Mechanical Cost): \$116,400  
Building Description: Renovation  
General Contractor: Bigelow Enterprises  
Contact Number: (507) 529-1161

Zumbrota/Mazeppa High School/Elementary, 2008

Location: Zumbrota/Mazeppa, Minnesota  
Size (Mechanical Cost): \$1,685,808  
Building Description: Addition/Renovation  
General Contractor: Johnson Controls  
Contact Number: (507) 282-0810



## Hotel/Motels:

### AmericInn, 2005

Location: Wabasha, Minnesota  
Size (Mechanical Cost): \$119,000  
Building Description: Addition  
General Contractor: W. A. Kreofsky  
Contact Number: (507) 534-3103

### Best Western, Apache, 2002

Location: Rochester, Minnesota  
Size (Mechanical Cost): \$234,642  
Building Description: Renovation  
General Contractor: Knutson Construction  
Contact Number: (507) 280-9768

### Courtyard by Marriott, 2004

Location: Rochester, Minnesota  
Size (Mechanical Cost): \$1,050,000  
Building Description: New Construction  
General Contractor: Tech Builders  
Contact Number: (507) 235-5561

### Doubletree Hotel, 2009

Location: Rochester, Minnesota  
Size (Mechanical Cost): \$190,000  
Building Description: Renovation  
General Contractor: Weis Builders  
Contact Number: (507) 288-2041

### Grandview Conference Center, 2009

Location: Nisswa, Minnesota  
Size (Mechanical Cost): \$89,075  
Building Description: New Construction  
General Contractor: Nor-son  
Contact Number: (218) 828-1722

### Grandview Lodge, 2008

Location: Nisswa, Minnesota  
Size (Mechanical Cost): \$66,160  
Building Description: Renovation/Remodel  
General Contractor: Nor-son  
Contact Number: (218) 828-1722

### Hampton Inn, 2008

Location: Rochester, Minnesota  
Size (Mechanical Cost): \$490,000  
Building Description: Multi-Story New Construction  
General Contractor: Henning Construction  
Contact Number: (515) 253-0943



*Sleep In & Suites, 2001*

Location: Rochester, Minnesota

Size (Mechanical Cost): \$234,642

Building Description: Renovation

General Contractor: Knutson Construction

Contact Number: (507) 280-9768

*Staybridge Suites, 2001*

Location: Rochester, Minnesota

Size (Mechanical Cost): \$234,642

Building Description: New Construction

General Contractor: Weis Builders

Contact Number: (507) 288-6757



## Multi-Unit Housing/Apartment Complex/Townhomes:

### Albert Lea Center, 2005

Location: Albert Lea, Minnesota  
Size (Mechanical Cost): \$707,217  
Building Description: Renovation / Multi Story  
General Contractor: RL Fauss  
Contact Number: (402) 727-5120

### Campus Village, 1992

Location: Rochester, Minnesota  
Size (Mechanical Cost): \$360,000  
Building Description: (36) unit multi-housing  
General Contractor: Construction Services  
Contact Number: (216) 619-1700

### Century Hills Townhomes, 2002

Location: Rochester, Minnesota  
Size (Mechanical Cost): 475,000  
Building Description: (4) unit, slab on grade  
General Contractor: Stylemark  
Contact Number: (507) 288-9376

### Chase Lakeside Condominiums, 2007

Location: Walker, Minnesota  
Size (Mechanical Cost): \$138,810  
Building Description: Multi-Unit Housing  
General Contractor: Nor-Son  
Contact Number: (218) 828-0487

### Eagles Landing, 2006

Location: Wabasha, Minnesota  
Size (Mechanical Cost): \$580,633  
Building Description: New Construction  
General Contractor: Zeman Construction Company  
Contact Number: (763) 398-8900

### Fairway Ridge Townhomes, 2003

Location: Rochester, Minnesota  
Size (Mechanical Cost): \$647,428  
Building Description: Multi-Unit Housing  
General Contractor: Weber Construction  
Contact Number: (651) 770-5350

### Georgetown Square, 2004

Location: Rochester, Minnesota  
Size (Mechanical Cost): \$220,000  
Building Description: Multi-Unit Housing  
General Contractor: Weis Builders  
Contact Number: (507) 288-2041



Gift of Life Transplant House, 1996, 2000, 2002, 2009

Location: Rochester, Minnesota  
Size (Mechanical Cost): \$1,085,000  
Building Description: 2-Story  
General Contractor: Weis Builders  
Contact Number: (507) 288-2041

Gray Gables Apartments, 1998

Location: Albert Lea, Minnesota  
Size (Mechanical Cost): \$700,000  
Building Description: 3 story apartments  
General Contractor:  
Contact Number:

The Green's Townhomes, 2000

Location: Rochester, Minnesota  
Size (Mechanical Cost): \$500,000  
Building Description: Single family attached townhomes  
General Contractor: Carlsen Construction  
Contact Number: (507) 282-8200

Oak Ridge Condominiums, 2006

Location: Hopkins, Minnesota  
Size (Mechanical Cost): \$195,344  
Building Description: Multi-Unit Housing  
General Contractor: Total Construction Services  
Contact Number: (651) 775-5165

Perlich Place Apartments, 1997

Location: Red Wing, Minnesota  
Size (Mechanical Cost): \$380,000  
Building Description: 2 story apartments  
General Contractor:  
Contact Number:

Pickerel Park Townhomes, 1999

Location: Albert Lea, Minnesota  
Size (Mechanical Cost): \$805,000  
Building Description: 4 story multi-plex  
General Contractor:  
Contact Number:

Plainview Apartments, 1988

Location: Plainview, Minnesota  
Size (Mechanical Cost): \$380,000  
Building Description:  
General Contractor:  
Contact Number:



Prairie Village Townhomes, 2000

Location: Blooming Prairie, Minnesota

Size (Mechanical Cost):\$320,000

Building Description: Single family attached townhomes

General Contractor: Meryln Olsen Homes

Contact Number: (952) 447-6004

Regency Apartments, 1997

Location: Austin, Minnesota

Size (Mechanical Cost): \$880,000

Building Description: (8) 2 story buildings

General Contractor:

Contact Number:

Siewert Apartments, 2008

Location: Hastings, Minnesota

Size (Mechanical Cost): \$504,174

Building Description: Multi-Unit Housing

General Contractor: Stotko-Speedling Construction

Contact Number: (651) 480-0055

South Shore Trails, 2006

Location: Plymouth, Minnesota

Size (Mechanical Cost): \$146,000

Building Description: Multi-Unit Housing

General Contractor: Total Construction Services

Contact Number: (651) 775-5165

Winona Student Housing, 2002

Location: Winona, Minnesota

Size (Mechanical Cost): \$770,000

Building Description: Multi-Unit Housing

General Contractor: Schwab Construction

Contact Number: (507) 454-5000



## Manufacturing:

### Albert Lea Select Foods, 2009

Location: Albert Lea, Minnesota  
Size (Mechanical Cost): \$175,488  
Building Description: Renovation  
General Contractor: Joseph Company  
Contact Number: (507) 437-3284

### Armour Eckrich, 2007 & 2008

Location: Mason City, Iowa  
Size (Mechanical Cost): \$547,313  
Building Description: Miscellaneous Projects  
General Contractor: Gleeson Constructors, LLC  
Contact Number: (712) 258-9300

### Global Dairy Solutions, 2004

Location: Byron, Minnesota  
Size (Mechanical Cost): \$73,400  
Building Description: New Construction  
General Contractor: MEC Construction  
Contact Number: (304) 592-5175

### Hormel Dubuque, 2008

Location: Dubuque, Iowa  
Size (Mechanical Cost): \$816,637  
Building Description: New Construction  
General Contractor: Gleeson Constructors, LLC  
Contact Number: (712) 258-9300

### McNeilus Steel, 2006

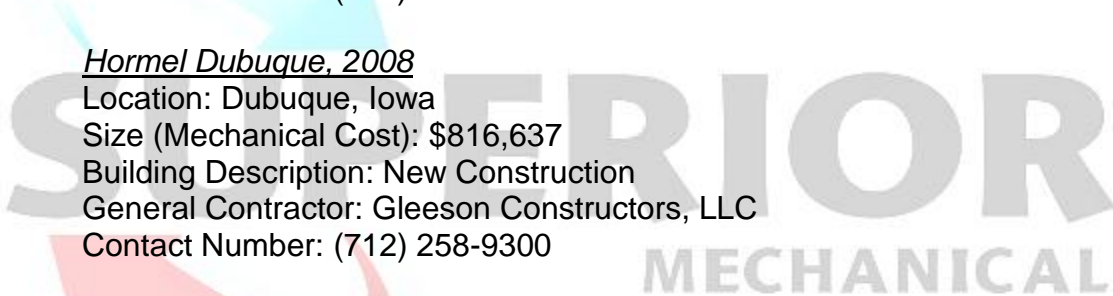
Location: Dodge Center, Minnesota  
Size (Mechanical Cost): \$37,929  
Building Description: Addition  
General Contractor: A. B. Systems  
Contact Number: (507) 288-9397

### McNeilus Truck Manufacturing, 2005

Location: Dodge Center, Minnesota  
Size (Mechanical Cost): \$70,882  
Building Description: Remodel Restroom  
General Contractor: A. E. Benike  
Contact Number: (507) 288-6575

### Prosthetics Labs, 2003

Location: Rochester, Minnesota  
Size (Mechanical Cost): \$289,198  
Building Description: New Construction  
General Contractor: Weis Builders  
Contact Number: (507) 288-2041



## Retail/Office:

### 19<sup>th</sup> Street Financial, 2008

Location: Rochester, Minnesota  
Size (Mechanical Cost): \$92,963  
Building Description: New Construction  
General Contractor: KM Building Company  
Contact Number: (612) 977-9060

### Charter Communications, 2009

Location: Rochester, Minnesota  
Size (Mechanical Cost): \$342,600  
Building Description: New Construction  
General Contractor: A. B. Systems  
Contact Number: (507) 288-9397

### Cinemagic Stadium 12 Theaters, 2002

Location: Rochester, Minnesota  
Size (Mechanical Cost): \$480,642  
Building Description: New Construction  
General Contractor: Direct Owner  
Contact Number: (507) 280-0333

### Fareway Foods, 2008

Location: Stewartville, Minnesota  
Size (Mechanical Cost): \$78,580  
Building Description: Remodel/Renovation  
General Contractor: Larson Construction  
Contact Number: (319) 334-7061

### Fareway Foods, 2009

Location: Worthington, Minnesota  
Size (Mechanical Cost): \$111,800  
Building Description: New Construction  
General Contractor: Larson Construction  
Contact Number: (319) 334-7061

### Galleria, 2008

Location: Rochester, Minnesota  
Size (Mechanical Cost): \$817,497  
Building Description: Renovation  
General Contractor: Weis Builders  
Contact Number: (507) 288-2041

### Galleria, 2008

Location: Rochester, Minnesota  
Size (Mechanical Cost): \$435,706  
Building Description: Multi Story Tenant Finish  
General Contractor: Weis Builders  
Contact Number: (507) 288-2041



Leashes and Leads, 2007

Location: Byron, Minnesota  
Size (Mechanical Cost): \$528,942  
Building Description: New Construction  
General Contractor: Direct Owner  
Contact Number: (507) 437-8441

PetCo, 2008

Location: Rochester, Minnesota  
Size (Mechanical Cost): \$64,500  
Building Description: Renovation  
General Contractor: Weis Builders  
Contact Number: (507) 288-7979

Reinders - Appliance Smart, 2008

Location: Rochester, Minnesota  
Size (Mechanical Cost): \$137,497  
Building Description: Renovation  
General Contractor: A. E. Benike  
Contact Number: (507) 288-6575

Sienna Square Retail Center, 2006

Location: Rochester, Minnesota  
Size (Mechanical Cost): \$56,476  
Building Description: New Construction  
General Contractor: Schoepner, Inc.  
Contact Number: (507) 286-8672

Super Value, 2009

Location: Pequot Lakes  
Size (Mechanical Cost): \$138,000  
Building Description: New Construction  
General Contractor: Nor-Son  
Contact Number: (218) 828-1722

Walgreens, 2009

Location: Eden Prairie, Minnesota  
Size (Mechanical Cost): \$45,000  
Building Description: Renovation  
General Contractor: North Central Construction  
Contact Number: (507) 288-6575

Wal-Mart, 2004

Location: Winona, Minnesota  
Size (Mechanical Cost): \$459,673  
Building Description: New Construction  
General Contractor: Weis Builders  
Contact Number: (507) 280-7979

**SUPERIOR**  
MECHANICAL

## Industrial:

### Armour Eckrich Meats, 2007

Location: Mason City, Iowa  
Size (Mechanical Cost): \$568,636  
Building Description: Renovation  
General Contractor: Gleeson Constructors LLC  
Contact Number: (712) 258-9300

### CF Industries, 2009

Location: Rosemount Minnesota  
Size (Mechanical Cost): \$11,440  
Building Description: New Construction  
General Contractor: RA Morton  
Contact Number: (320) 251-0262

### Global Dairy Solutions, 2004

Location: Byron, Minnesota  
Size (Mechanical Cost): \$73,400.00  
Building Description: New Construction  
General Contractor: MEC Construction  
Contact Number: (304) 592-5175

### Hormel, 2006, 2007 & 2008

Location: Austin, Minnesota  
Size (Mechanical Cost): \$120,053  
Building Description: Miscellaneous Projects  
General Contractor: Hormel  
Contact Number: (507) 437-5611

### Hormel, 2007

Location: Austin, Minnesota  
Size (Mechanical Cost): \$69,082  
Building Description: Airline Main  
General Contractor: Hormel  
Contact Number: (507) 437-5611

### Hormel, 2006

Location: Austin, Minnesota  
Size (Mechanical Cost): \$282,890  
Building Description: Corporate Offices  
General Contractor: Wagner Construction Company  
Contact Number: (507) 433-1879

### Hormel: Austin, QPP Welfare Addition, 2006

Location: Austin, Minnesota  
Size (Mechanical Cost): \$791,690  
Building Description: Addition  
General Contractor: A. B. Systems  
Contact Number: (507) 288-9397

**SUPERIOR**  
MECHANICAL

Hormel: QPP Livestock Building

Location: Austin, Minnesota  
Size (Mechanical Cost): \$1,421,000  
Building Description: Addition/Renovation  
General Contractor: Hormel Foods  
Contact Number (507) 437-5779

Hormel - Dan's Prize,

Location: Browerville, Minnesota  
Size (Mechanical Cost): \$1,327,989  
Building Description: New Construction  
General Contractor: Gleeson Construction  
Contact Number: (712) 258-9300

Hormel, 2009

Location: Austin, Minnesota / Knoxville, Osceola, Iowa  
Size (Mechanical Cost): \$622,000  
Building Description: Miscellaneous Projects  
General Contractor: Hormel  
Contact Number: (507) 437-5611

Primera, 2006

Location: Altura, Minnesota  
Size (Mechanical Cost): \$116,436  
Building Description: Renovation  
General Contractor: W. A. Kreofsky  
Contact Number: (507) 534-3103

Primera Foods, 2010

Location: Altura, Minnesota / Britt, Iowa  
Size (Mechanical Cost): \$100,361  
Building Description: Renovation  
General Contractor: Primera Foods  
Contact Number: (641) 843-3854, (507) 796-9100

Rochester Meats, 2008

Location: Rochester, Minnesota  
Size (Mechanical Cost): \$75,000  
Building Description: Addition/Renovation  
General Contractor: A. B. Systems  
Contact Number: (507) 288-9397

Rochester Ready Mix, 2007 & 2008

Location: Rochester, Minnesota  
Size (Mechanical Cost): \$445,000  
Building Description: New Construction  
General Contractor: Rochester Ready Mix  
Contact Number: (507) 289-4022

## Restaurants/Bars:

### 300 on First, 2008

Location: Rochester, Minnesota  
Size (Mechanical Cost): \$56,486  
Building Description: Renovation/Remodel  
General Contractor: Construction Collaborative  
Contact Number: (507) 289-9002

### BB's Pizzeria, 2006

Location: Rochester, Minnesota  
Size (Mechanical Cost): \$40,842  
Building Description: Tenant Fit-up  
General Contractor: Dave Larson Construction  
Contact Number: (507) 281-0893

### Buffalo Wild Wings, 2008

Location: Rochester, Minnesota  
Size (Mechanical Cost): \$6,867  
Building Description: Renovation  
General Contractor: A. E. Benike  
Contact Number: (507) 288-6575

### Caribou Coffee, 2007

Location: Rochester, Minnesota  
Size (Mechanical Cost): \$32,139  
Building Description: New Construction  
General Contractor: Weis Builders  
Contact Number: (507) 288-2041

### Catering by Design, 2008

Location: Rochester, Minnesota  
Size (Mechanical Cost): \$12,400  
Building Description: New Construction  
General Contractor: Reliable Contractors  
Contact Number: (507) 288-4600

### Chase Coffee Shop, 2007

Location: Walker, Minnesota  
Size (Mechanical Cost): \$6,658  
Building Description: Renovation  
General Contractor: Chase Properties  
Contact Number: (218) 547-7777

### Chipolte, 2004

Location: Rochester, Minnesota  
Size (Mechanical Cost): \$65,500  
Building Description: New Construction  
General Contractor: Tech Builders  
Contact Number: (507) 235-5561

**SUPERIOR**  
MECHANICAL

Froot's, 2008

Location: Rochester, Minnesota  
Size (Mechanical Cost): \$8,158  
Building Description: New Construction  
General Contractor:  
Contact Number: (507)

Golden Corral, 2001

Location: Rochester, Minnesota  
Size (Mechanical Cost): \$117,510  
Building Description: New Construction  
General Contractor: Nelson Construction  
Contact Number: (507) 289-6789

Green Mill Restaurant, 2004

Location: Rochester, Lakeville, Hastings, Minnesota  
Size (Mechanical Cost): \$160,746  
Building Description: New Construction  
General Contractor: Stotko Speedling / Welsh Companies  
Contact Number: (651) 480-0055, (952)897-7700

Java Detour, 2004

Location: Rochester, Minnesota  
Size (Mechanical Cost): \$13,980  
Building Description: New Construction  
General Contractor: Weis Builders  
Contact Number: (507) 288-2041

Macho Nacho, 2009

Location: Rochester Minnesota  
Size (Mechanical Cost): \$5,500  
Building Description: Remodel  
General Contractor: Key Builders  
Contact Number: (507) 288-3235

McDonald's, 2007

Location: Albert Lea, Minnesota  
Size (Mechanical Cost): \$63,855  
Building Description: New Construction  
General Contractor: The Joseph Company  
Contact Number: (507) 437-3284

McDonald's, 2008

Location: Charles City, Iowa  
Size (Mechanical Cost): \$175,560  
Building Description: New Construction  
General Contractor: A. E. Benike  
Contact Number: (507) 288-6575

SUPERIOR  
MECHANICAL

McDonald's, 2008

Location: Rochester, Minnesota  
Size (Mechanical Cost): \$10,515  
Building Description: Miscellaneous Projects  
General Contractor: Courtesy Corporation

Old Country Buffet, 2005

Location: Rochester, Minnesota  
Size (Mechanical Cost): \$38,720  
Building Description: Renovation  
General Contractor: Restaurant Services, Inc.

Philly Steak & Cheese, 2006

Location: Rochester, Minnesota  
Size (Mechanical Cost): \$48,118  
Building Description: New Construction  
General Contractor: Construction Collaborative  
Contact Number: (507) 289-9002

Pot Belly Sandwiches, 2006

Location: Coon Rapids & Eagan, Minnesota  
Size (Mechanical Cost): \$63,000  
Building Description: Tenant Fit-up  
General Contractor: LS Black  
Contact Number: (651)774-8448

Sontes Restaurant, 2006

Location: Rochester, Minnesota  
Size (Mechanical Cost): \$24,570  
Building Description: Renovation  
General Contractor: Construction Collaborative  
Contact Number: (507) 289-9002

Steve's Pizza, 2009

Location: Austin, Minnesota  
Size (Mechanical Cost): \$78,843  
Building Description: Renovation  
General Contractor: Paul Johnson Architect  
Contact Number: (641) 357-2283

Subway, 2005

Location: Rochester, Minnesota  
Size (Mechanical Cost): \$17,050  
Building Description: New Construction  
General Contractor: Dave Larson Construction  
Contact Number: (507) 281-3236



Taste of Egypt, 2009

Location: Rochester Minnesota

Size (Mechanical Cost): \$975

Building Description: Renovation

General Contractor: Construction Collaborative

Contact Number: (507) 289-9002

Z Pizza, 2006

Location: Rochester, Minnesota

Size (Mechanical Cost): \$27,552

Building Description: Renovation/Remodel

General Contractor: A. E. Benike

Contact Number: (507) 288-6575



## Assisted Living/Nursing Homes:

### Arbor Lakes Senior Living Center, 2010

Location: Maple Grove, Minnesota  
Size (Mechanical Cost): \$2,761,601  
Building Description: New Construction  
General Contractor: Weis Builders  
Contact Number: (507) 288-2041

### Crossroads Senior Housing, 2009

Location: Lakeville, Minnesota  
Size (Mechanical Cost): \$1,096,619  
Building Description: New Construction  
General Contractor: Stahl Construction  
Contact Number: (952) 931-9300

### Hillcrest Community Care Center, 2006

Location: Plainview, Minnesota  
Size (Mechanical Cost): \$48,070  
Building Description: Remodel/Addition  
General Contractor: W. A. Kreofsky  
Contact Number: (507) 534-3103

### Kentucky Ridge, 2009

Location: Mason City, Iowa  
Size (Mechanical Cost): \$507,737  
Building Description: New Construction  
General Contractor: Dean Schneider Construction  
Contact Number: (641) 357-2283

### Lewiston Assisted Living, 2004

Location: Lewiston, Minnesota  
Size (Mechanical Cost): \$64,500  
Building Description: Remodel/Addition  
General Contractor: Direct Owner, Rick & Michelle Speltz  
Contact Number: (507) 932-3688

### Our House Assisted Living, 2006

Location: Austin, Minnesota  
Size (Mechanical Cost): \$110,000  
Building Description: Remodel/Addition  
General Contractor: Horizon Construction  
Contact Number: (608) 848-4500

### Renville Nursing Home, 2008

Location: Renville, Minnesota  
Size (Mechanical Cost): \$183,000  
Building Description: Remodel/Addition  
General Contractor: Prime General Contractors  
Contact Number: (507) 437-3284

Sacred Heart Care Center, 2007

Location: Austin, Minnesota  
Size (Mechanical Cost): \$36,000  
Building Description: Remodel/Addition  
General Contractor: Joseph Company  
Contact Number: (507) 437-3284

Samaritan Bethany, Home on Eighth, 2010

Location: Rochester Minnesota  
Size (Mechanical Cost): \$4,310,449  
Building Description: Renovation  
General Contractor: A. E. Benike  
Contact Number: (507)288-6575

Spring Grove Assisted Living, 2005

Location: Spring Grove, Minnesota  
Size (Mechanical Cost): \$172,340  
Building Description: Remodel/Addition  
General Contractor: Red Soppa  
Contact Number: (507) 932-3688

Spring Valley Senior Living, 2006

Location: Spring Valley, Minnesota  
Size (Mechanical Cost): \$321,040  
Building Description: Remodel/Addition  
General Contractor: Harty Elving Design Build, Inc.  
Contact Number: (612) 332-4422

Stewartville Care Center, 2006

Location: Stewartville, Minnesota  
Size (Mechanical Cost): \$76,848  
Building Description: Remodel/Addition  
General Contractor: The Joseph Company  
Contact Number: (507) 437-3284



## Non-Profit:

### Boy Scout Castle, 2009

Location: Nisswa, Minnesota

Size (Mechanical Cost): \$180,234

Building Description: New Construction

General Contractor: W Gohman Construction

Contact Number: (320) 363-7781

### Camp Olson, 2009

Location: Little Boy Lake, Minnesota

Size (Mechanical Cost): \$61,821

Building Description: New Construction

General Contractor: Nor-son

Contact Number: (218) 828-1722

### Gift of Life Transplant House, 1996, 2000, 2002, 2009

Location: Rochester, Minnesota

Size (Mechanical Cost): \$1,085,000

Building Description: 2-Story

General Contractor: Weis Builders

Contact Number: (507) 288-2041

### United Way of Olmsted County, 2004

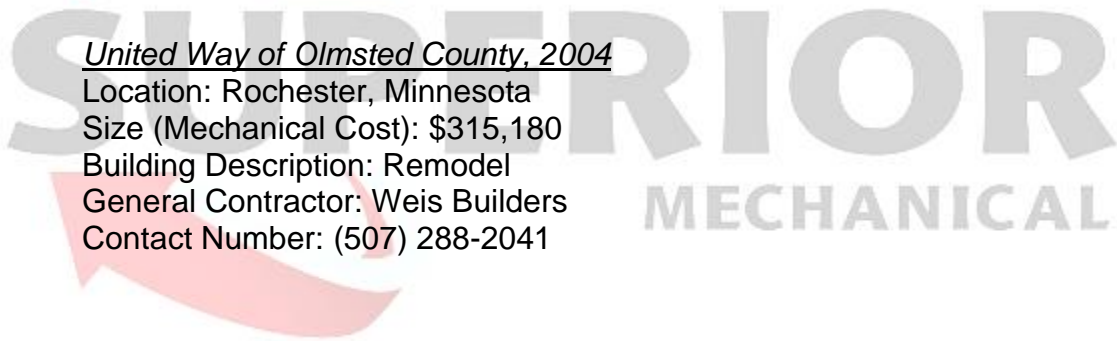
Location: Rochester, Minnesota

Size (Mechanical Cost): \$315,180

Building Description: Remodel

General Contractor: Weis Builders

Contact Number: (507) 288-2041



## Geo-Thermal:

### Cimemagic Stadium 12 Theaters, 2002

Location: Rochester, Minnesota  
Size (Mechanical Cost): \$480,642  
Building Description: New Construction  
General Contractor: Direct Owner  
Contact Number: (507) 280-0333

### Galtere Energy Center, 2010

Location: Preston Minnesota  
Size (Mechanical Cost): \$382,500  
Building Description: New Construction  
General Contractor: Schwab, LLC  
Contact Number: (507) 454-5000

### Leashes and Leads, 2007

Location: Byron, Minnesota  
Size (Mechanical Cost): \$528,942  
Building Description: New Construction  
General Contractor: Direct Owner  
Contact Number: (507) 437-8441

### Resurrection Lutheran School, 2001

Location: Rochester, Minnesota  
Size (Mechanical Cost): \$436,745  
Building Description: New Construction  
General Contractor: Knutson Construction  
Contact Number: (507) 280-9768

